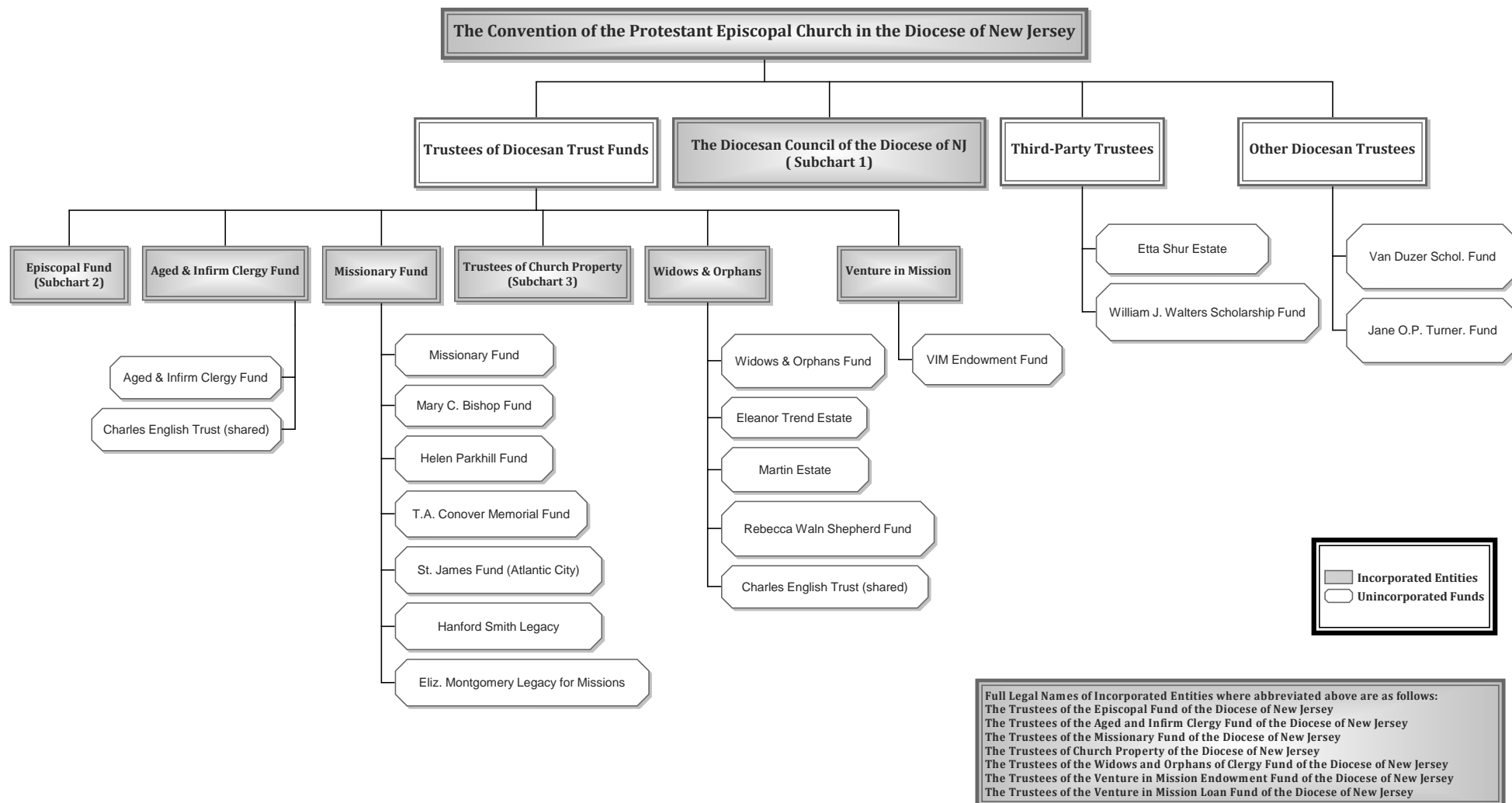
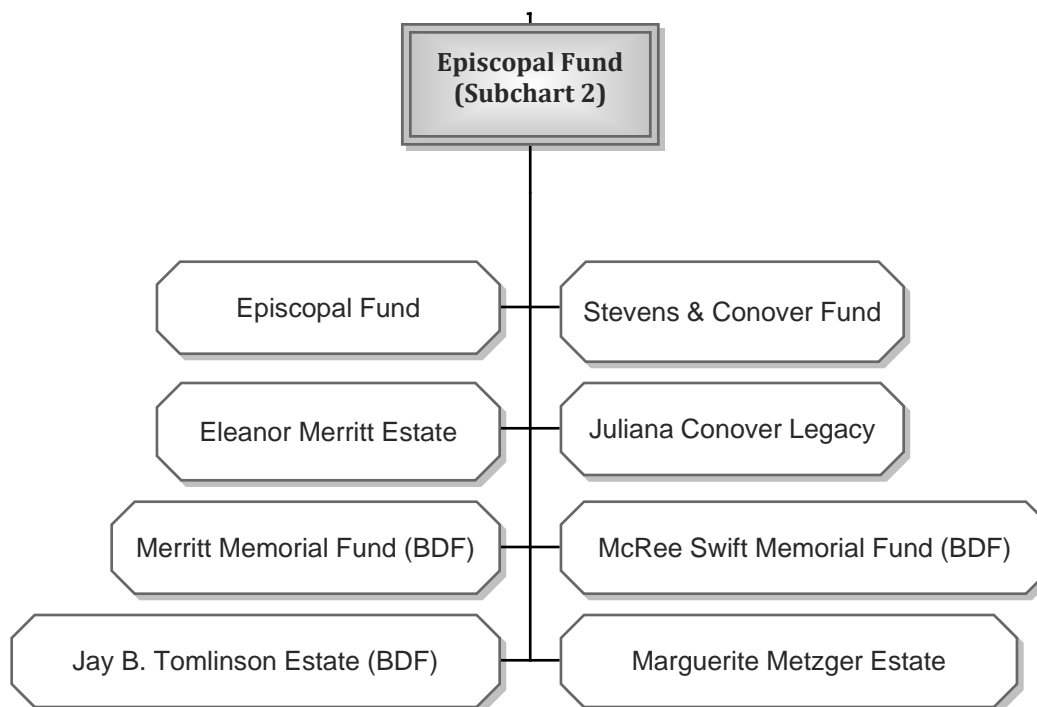


**Joint Committee Task Force - Report to the 228th Convention**  
**Episcopal Diocese of New Jersey**  
**Corporate and Fund Structure - Draft Copy for Illustrative Purposes Only**



Draft based on preliminary findings of the Joint Task Force on the Catalog of Funds ("JTF"), for illustrative purposes only.  
 The JTF reserves the right to alter its final recommendations based upon completion of its research and deliberations.

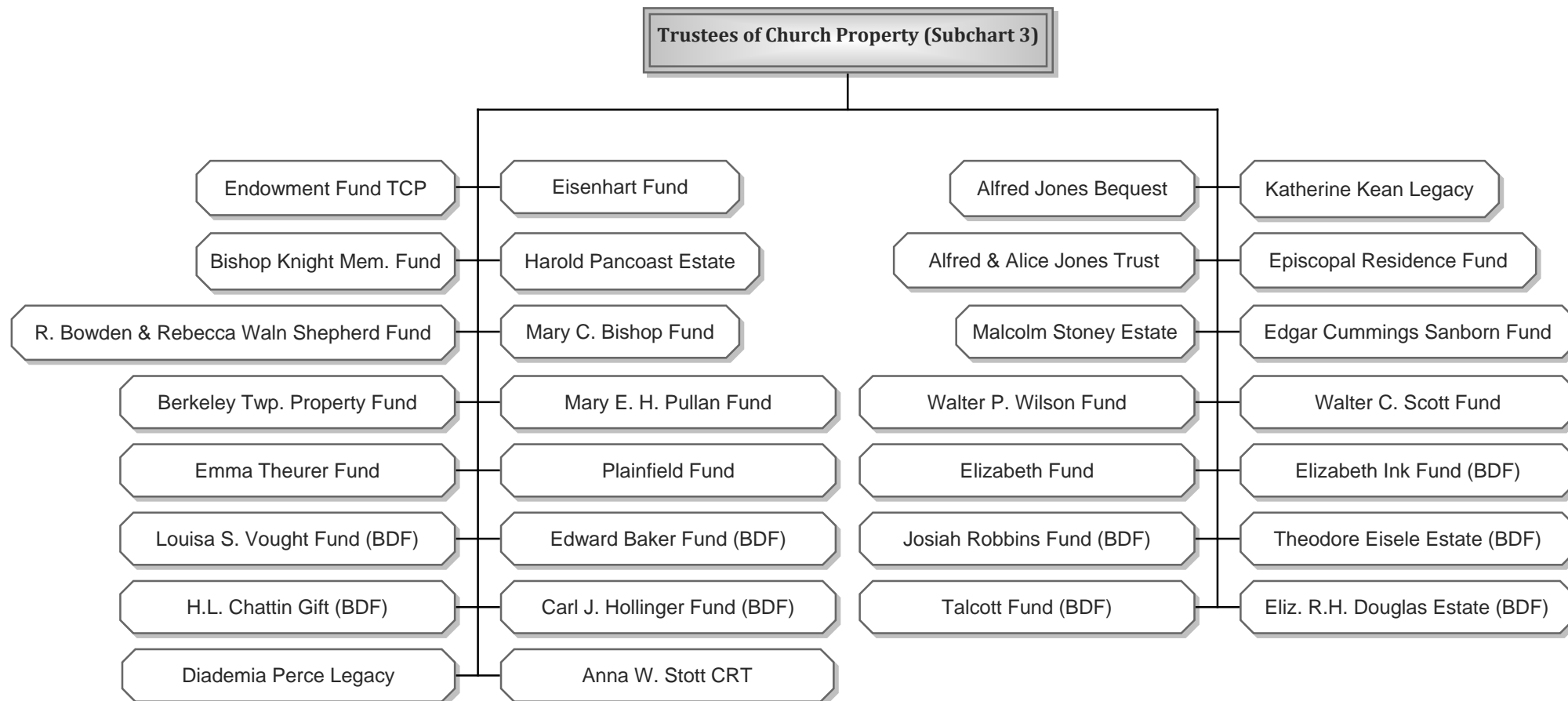
**Joint Committee Task Force - Report to the 228th Convention**  
**Episcopal Diocese of New Jersey**  
**Subchart 2 - Trustees of the Episcopal Fund**  
**Corporate and Fund Structure - Draft Copy for Illustrative Purposes Only**



Date Issued: 01-17-12 Diocesan Council Meeting

Note: BDF = Bishop's Discretionary Fund

**Joint Committee Task Force - Report to the 228th Convention**  
**Episcopal Diocese of New Jersey**  
**Subchart 3 - Trustees of Church Property**  
**Corporate and Fund Structure - Draft Copy for Illustrative Purposes Only**



Date Issued: 01-17-12 Diocesan Council Meeting

Note: BDF = Bishop's Discretionary Fund

**Joint Committee Task Force - Report to the 228th Convention**  
**Episcopal Diocese of New Jersey**  
**Subchart 1 - Diocesan Council**  
**Corporate and Fund Structure - Draft Copy for Illustrative Purposes Only**

